



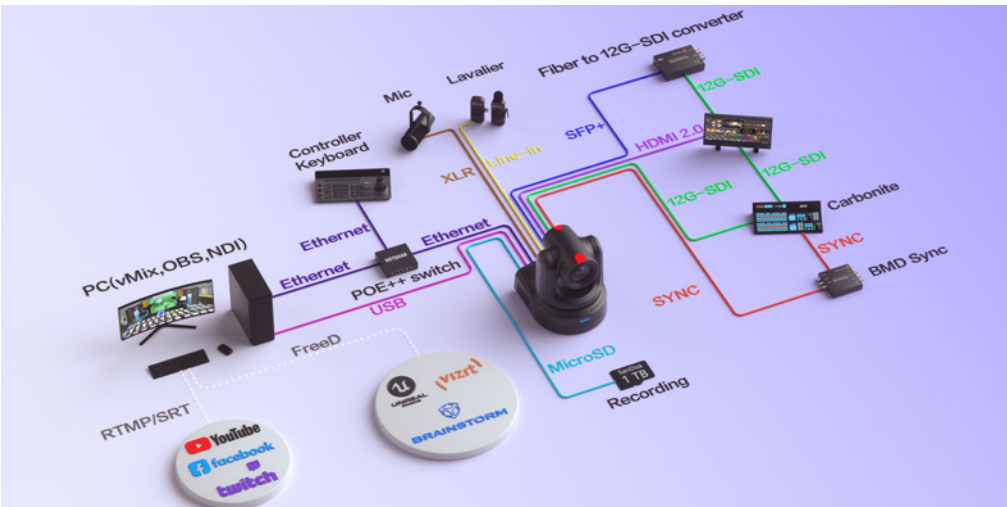
EXPLORE

1-Inch Sensor PTZ Camera for Broadcasters

Broadcast Level PTZ Camera Disrupts AV Industry

**20X | 4K | AUTO-TRACKING
FREED | GENLOCK | AUTO FOCUS**

SFP+/12G-SDI/HDMI/NDI®/NDI®HX/XLR



High-Performance Sensor and Image Processor

The Explore boasts a Sony 1-inch 9MP CMOS sensor and a state-of-the-art image processor to deliver stunning ultra-high-definition images.



AI Auto Focus

Experience seamless and precise focusing with our PTZ camera's advanced AI Auto Focus. Whether it's live events or VR production, Telycam AI Auto Focus empowers you sharp focus and professional-quality footage.



Versatile Output Options

The Explore offers diverse output options, ensuring 4K60p output through NDI®, NDI®HX, 12G-SDI, HDMI, and SFP+. It provides great flexibility and compatibility to Telycam users.



Genlock Functionality

The Explore features Genlock for better synchronization. This allows it to function as the main camera, ensuring precise video synchronization with sub-cameras in broadcasting and live streaming setups.



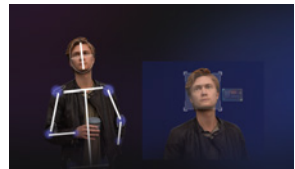
Robust Audio Capabilities

The Explore features 3.5mm line-in and Mini XLR with Phantom power, providing compatibility with various microphones and audio equipment.



Native AI-Based Auto-Tracking

The Explore features AI-based auto-tracking, automatically following subjects to enhance ease of use and capture the moments flawlessly.



FreeD Technology Integration

The Explore integrates Free D technology for versatile shooting angles, ideal for both real-world and virtual applications.



MicroSD Card Slots

MicroSD card slots—one for firmware upgrades and the other for local recording. Record directly onto the camera for instant backup during network issues or quick access, ideal for prompt event review.



Specifications

| Camera | Explore |
|--------------------------|-----------------------------|
| Part NO. | TLC-900-IP-20-4K(NDI)-AB |
| Sensor | 1 inch, 9MP UHD CMOS sensor |
| Zoom | 20X optical zoom |
| Lens | f = 9.79~186.5mm, F2.8~F4.5 |
| Horizontal View Angle | 71°(Wide)~4.05°(Tele) |
| Vertical Viewing Angle | 39.6°~2.2° |
| Diagonal Viewing Angle | 78.5°~4.6° |
| Minimum Working Distance | wide: 15cm |
| S/N Ratio | ≥50dB |

Video Format

12G-SDI:
3840*2160 P60/50/30/25/29.97/24/23.98;
1920*1080P60/50/30/25/59.94/29.97/24/23.98;
1920*1080I60/50/59.94; 1280*720P60/50/30/25/59.94/29.97

3G-SDI:
1920*1080P60/59.94/50/30/29.97/25/24/23.98;
1920*1080I60/59.94/50; 1280*720P60/59.94/50/30/29.97/25

HDMI2.0:
3840*2160 P60/50/30/25/29.97/24/23.98;
1920*1080P60/50/30/25/59.94/29.97/24/23.98;
1920*1080I60/50/59.94; 1280*720P60/50/30/25/59.94/29.97

NDI® / NDI®HX:
Main Stream: 3840*2160P15~60; 1920*1080P15~60;
1280*720P15~60; 1024*576P15~60;
Sub Stream: 640*360P15~30

SFP+:
3840*2160 P60/50/30/25/29.97/24/23.98;
1920*1080P60/50/30/25/59.94/29.97/24/23.98;
1920*1080I60/50/59.94; 1280*720P60/50/30/25/59.94/29.97

USB Type-C:
NV12: 1920*1080P5; 1280*720P15; 1024*576P25; 800*448P30
YUYV: 1920*1080P5; 1280*720P15; 1024*576P25; 800*448P30
MJPG: 3840*2160P30; 1920*1080P60; 1280*720P60;
1024*576P60; 800*448P60
H264/H265: 3840*2160P30; 1920*1080P60; 1280*720P60;
1024*576P60; 800*448P60

Image Parameters

| | |
|-------------------------------|--|
| Noise Reduction | 2D&3D |
| Minimum lux | 0.5Lux(50 IRE Max AGC, 1/30, F1.8) |
| White Balance | Auto/Manual/ATW/Push/Indoor/Outdoor/Color Temperature |
| Exposure | Auto/Manual/Shutter Priority/Iris Priority/Brightness Priority |
| Anti-Flicker | OFF, 50Hz, 60Hz |
| Image Flip/Mirroring | Supported |
| Focus/Iris/Electronic-shutter | Auto/Manual |
| Gamma | Supported |
| Backlight Compensation | Supported |

IP Streaming

| | |
|--------------------|--|
| Video Encoding | H.264/H.265 |
| Bitrate Control | Variable bitrate(VBR), Constant bitrate(CBR) |
| Bitrate Range | 1M~120Mbps |
| Network Port Speed | 1000M |
| Protocol | NDI®, NDI®HX, SRT, HTTP, RTSP, RTMP, ONVIF,SSDP,RTP, Multicast, NTP, VISCA over IP(TCP&UDP), VISCA, PELCO P/D, FreeD |

Pan/Tilt Movement

| | |
|---------------------|---|
| Preset | Remote controller: 10; Serial port: 256; Accuracy: 0.1° |
| Pan Rotation Angle | -170°~+170° |
| Tilt Rotation Angle | -90°~+90° |
| Pan Rotation Speed | 0.1°~80°/s |
| Tilt Rotation Speed | 0.1°~60°/s |

I/O Interface

| | |
|--------------|---|
| Control Port | RS232, RS485, RS422, RJ45, USB, NDI®HX |
| Video Port | NDI®, NDI®HX, HDMI 2.0, 12G-SDI, 3G-SDI, SFP+, USB Type-C |
| Audio Port | Min XLR(with phantom power), stereo 3.5mm line in |
| Tally | Supported |
| POE++ | Supported |
| Daisy Chain | Supported |

General

| | |
|-----------------------|---------------------------|
| Input Voltage | DC12V, POE++(IEEE802.3bt) |
| Operating Temperature | -10°C~50°C |
| Operating Humidity | ≤80% |
| Dimension (LxWxH) | 232.5 mm×264mm×269mm |
| Net Weight | 4.6kg(10.15LBS) |
| Color | Black/White |

Audio Input
3.5mm stereo line in,
mini-XLR with phantom power

Remote control port
VISCA IN/VISCA OUT/RS422



Video Output
SFP+, G/L IN, 12G-SDI, 3G-SDI, HDMI, USB Type-C, NDI®, NDI®HX

Power Supply
POE++, DC12V